

Webb's Plaza

St. Petersburg, Pinellas County, Florida



Description:

Webb's Plaza is a 62,536 square foot retail shopping center. The center's configuration provides for maximum visibility to Third Avenue South. It is a great location at the corner of Third Avenue South and Eighth Street South. Excellent access, signage and visibility.

Location:	800 Third Avenue South and 355 Eighth Street South, St. Petersburg 33701
Size:	63,303 square foot Shopping Center
Tenants:	Family Dollar and Domino's Pizza

Site Demographics:	Population	Households	Avg HH Income	Avg Age
3 Mile Radius:	90,254	38,964	\$45,976	39

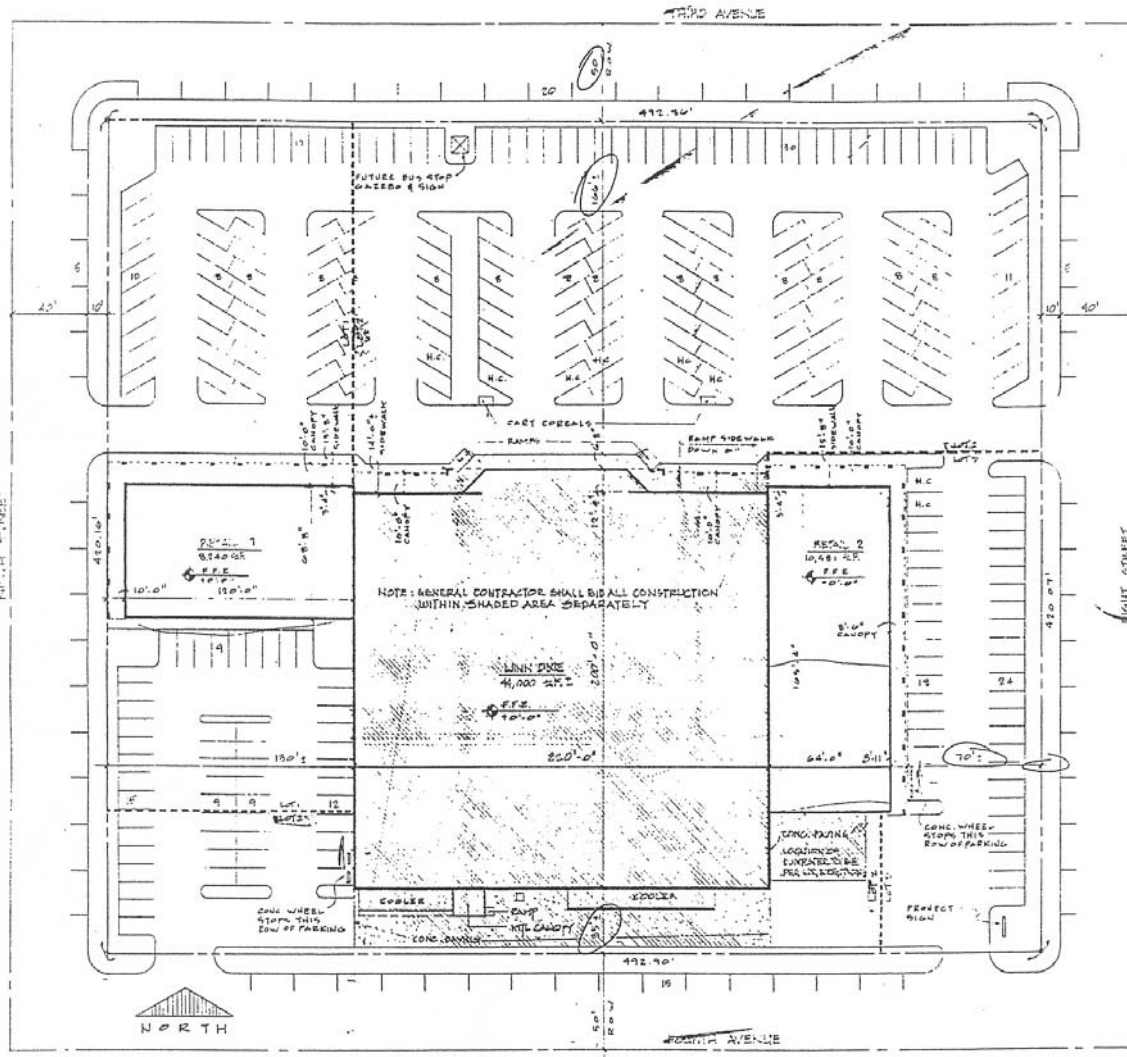
Office: (727) 347-5796 | Fax: (727) 345-5722 | P.O. Box 48547, St. Petersburg, Florida 33743
Contact: Pauline A. Pappas | Email: prlm@prlminc.com | Visit us on the Web: www.prlminc.com

Your Local Retail Leasing Solution, Since 1982



Webb's Plaza

St. Petersburg, Pinellas County, Florida
SITE PLAN AND TENANT LIST



Square Footage	Tenants
2,789	Hong Kong Buffet
2,570	J & K Beauty Supply
1,574	Space Available

Office: (727) 347-5796 | Fax: (727) 345-5722 | P.O. Box 48547, St. Petersburg, Florida 33743
 Contact: Pauline A. Pappas | Email: prlm@prlminc.com | Visit us on the Web: www.prlmnc.com

1,339	City Nails II
12,000	Space Available – Owned by Separate Entity
22,000	Space Available – Owned by Separate Entity
10,945	Family Dollar – Owned by Separate Entity
730	Ace Cash Express
685	Mr. Gold Jewelry
2,874	Space Available – END CAP
1,540	99 Cent Store Plus
1,582	Coin Laundry
1,510	Domino's Pizza
1,165	Church