

Royal Palms on 4th

St. Petersburg, Pinellas County, Florida



Description:

Royal Palms on 4th is a 23,888 square foot retail shopping center. The center's configuration provides for maximum visibility to 4th Street. Rotated Towers anchor the two wings of the center and invite you into the central gardened courtyard. A varied and mixed architectural façade and lush landscaping, along with barrel tile roof, stone veneers and individual fabric awnings offer distinctive features of an east facing 4th Street elevation.

Location:	5004-5062 4 th Street North, St. Petersburg 33703
Size:	23,888 square foot Shopping Center
Tenants:	Bonefish Grill, Mattress Giant, and Talbots

Site Demographics:	Population	Households	Avg HH Income	Avg Age
3 Mile Radius:	104,504	47,889	\$56,635	42

Your Local Retail Leasing Solution, Since 1982

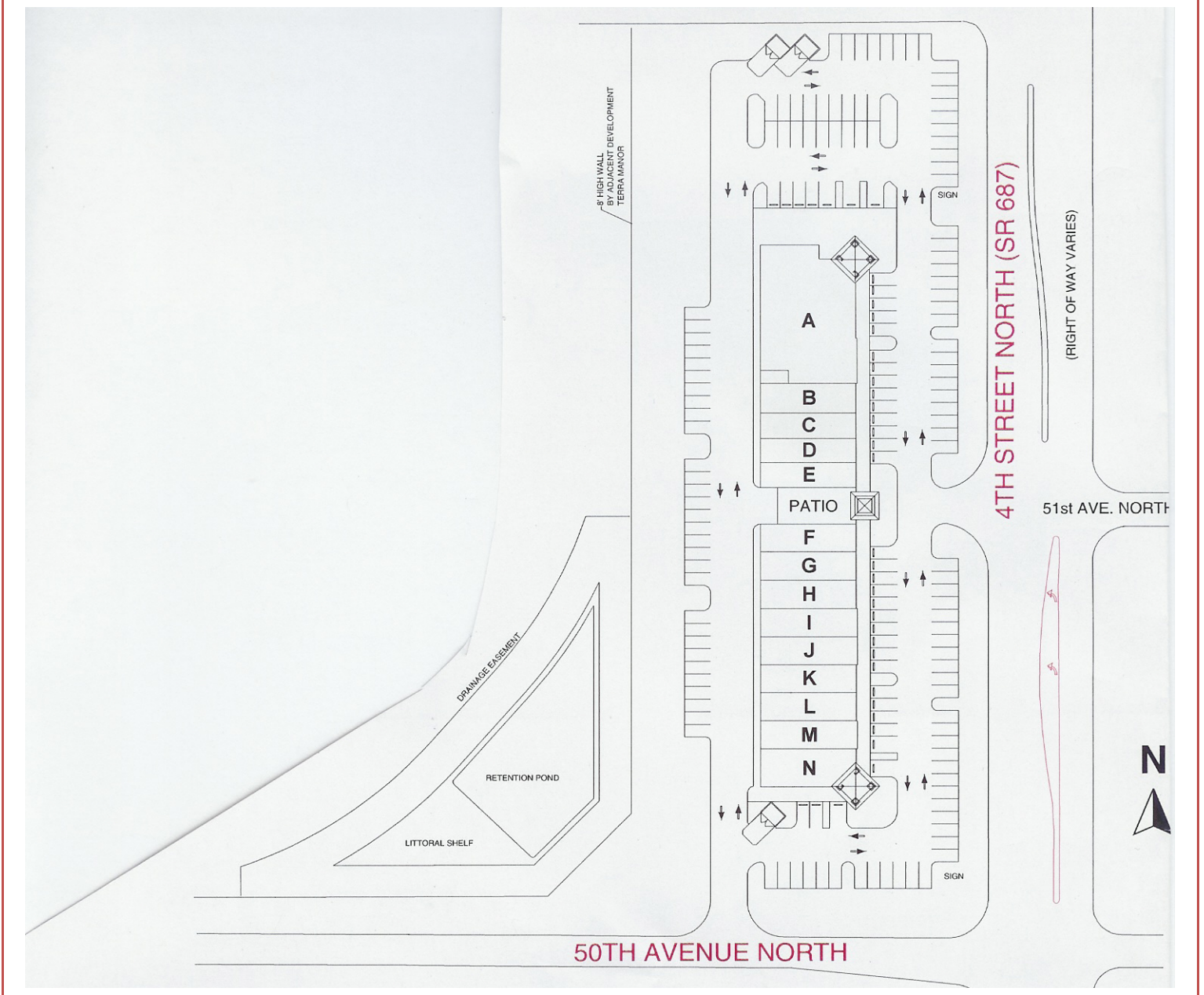


Office: (727) 347-5796 | Fax: (727) 345-5722 | P.O. Box 48547, St. Petersburg, Florida 33743
 Contact: Pauline A. Pappas | Email: prlm@prlm.com | Visit us on the Web: www.prlm.com

Royal Palms on 4th

St. Petersburg, Pinellas County, Florida

SITE PLAN AND TENANT LIST



Square Footage	Tenants
6,355	Bonefish Grill
1,340	Vino 100
3,653	Mattress Giant
2,680	Space Available
1,340	Great Frame Up
2,720	Massage Envy
2,680	AT & T
3,009	Talbots

Office: (727) 347-5796 | Fax: (727) 345-5722 | P.O. Box 48547, St. Petersburg, Florida 33743
 Contact: Pauline A. Pappas | Email: prlm@prlminc.com | Visit us on the Web: www.prlminc.com